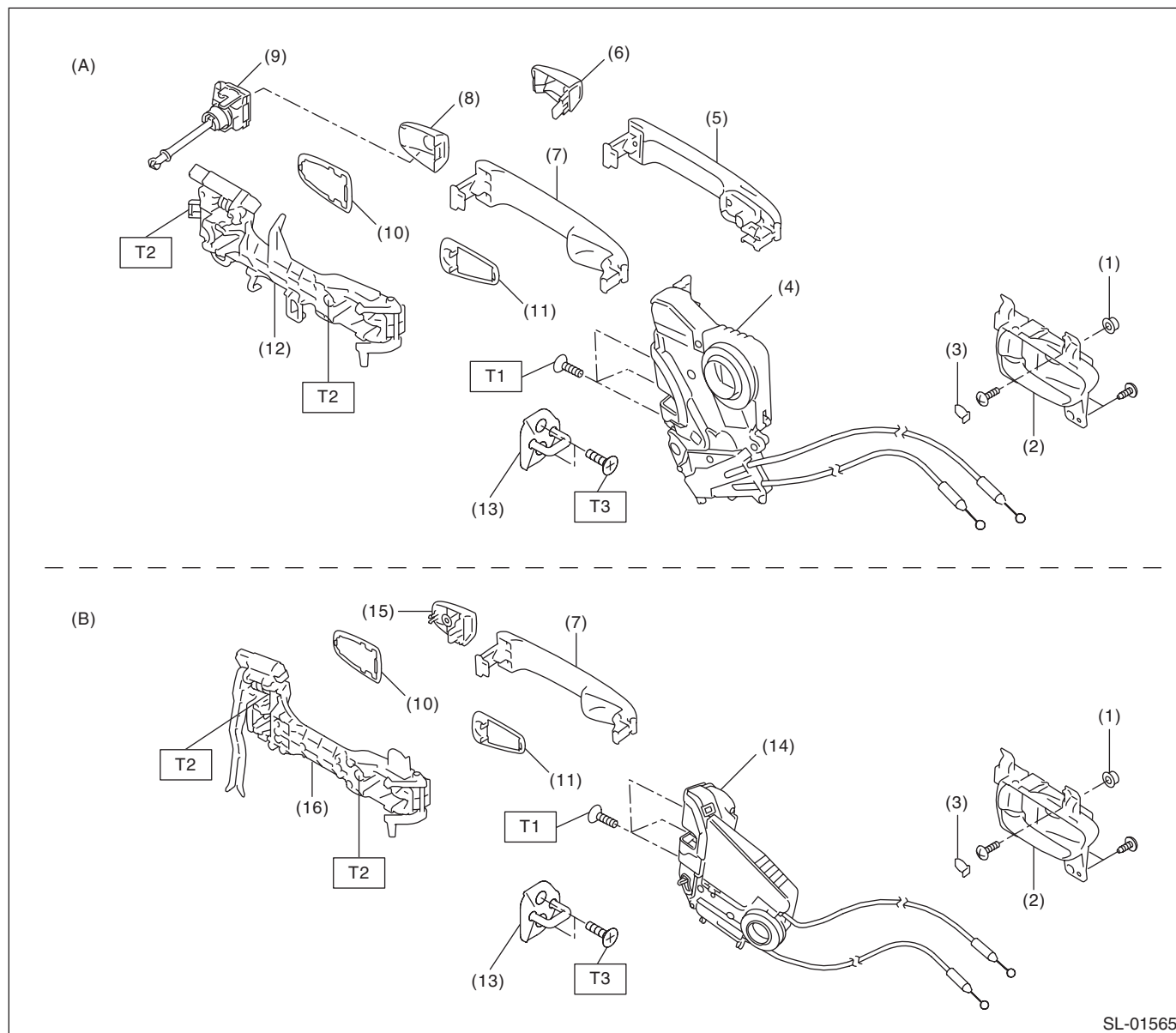


1. General Description

A: COMPONENT

1. DOOR LOCK ASSEMBLY



SL-01565

(A) Front

(B) Rear

(1) Grommet - screw

(2) Remote ASSY - door

(3) Cap remote

(4) Latch & actuator ASSY - front

(5) Handle - door outer (model with keyless access)

(6) Cover - handle front outer (passenger's seat)

(7) Handle - door outer (model without keyless access)

(8) Cover - handle front outer (driver's seat)

(9) Key lock - door (driver's seat only)

(10) Spacer - door handle outer B

(11) Spacer - door handle outer A

(12) Frame ASSY - front door outer

(13) Striker - door

(14) Latch & actuator ASSY - rear

(15) Cover - handle rear outer

(16) Frame ASSY - rear door outer

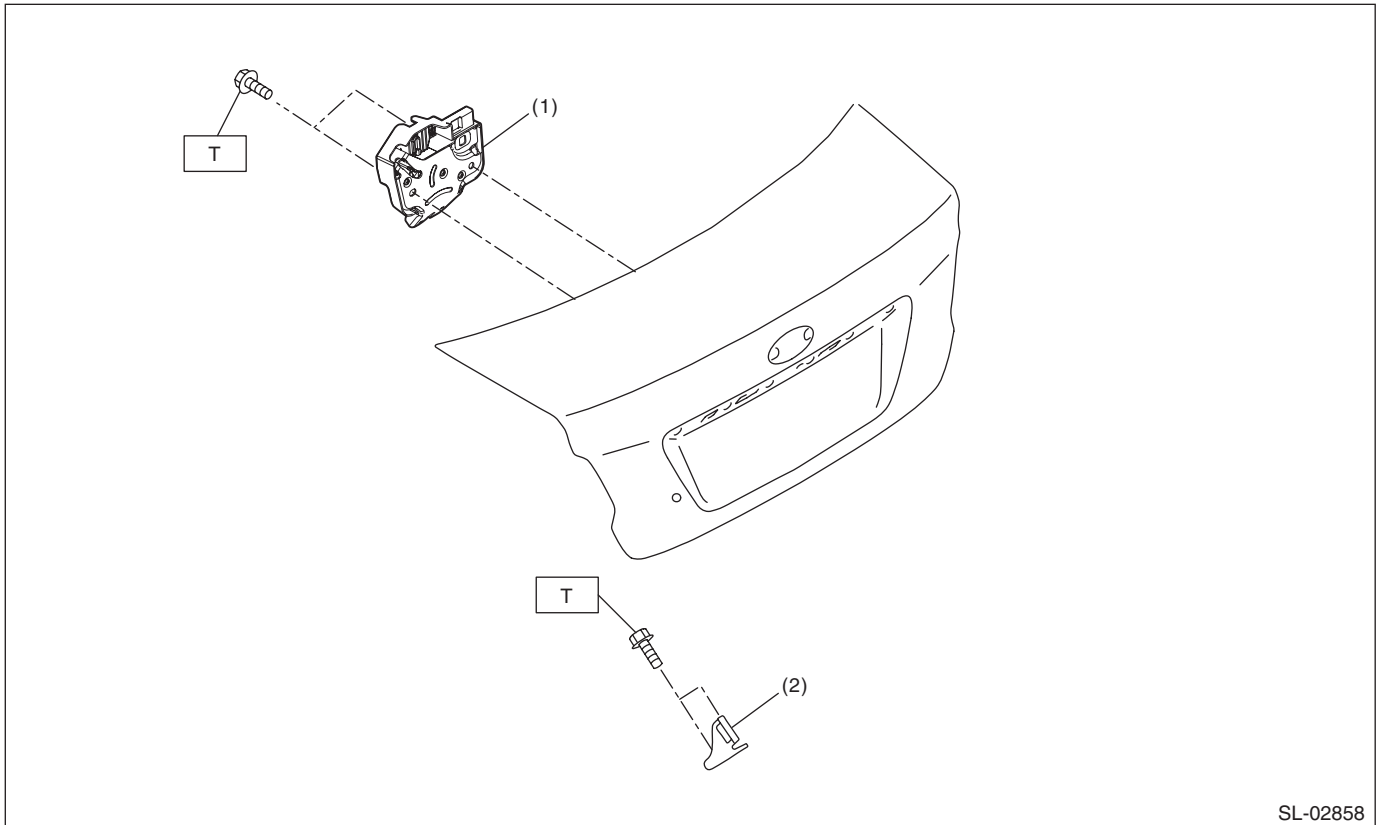
Tightening torque: N·m (kgf-m, ft-lb)

T1: 6.5 (0.7, 4.8)

T2: 7.5 (0.8, 5.5)

T3: 18 (1.8, 13.3)

2. TRUNK LID LOCK



SL-02858

(1) Latch & actuator - trunk lid

(2) Striker - trunk lid

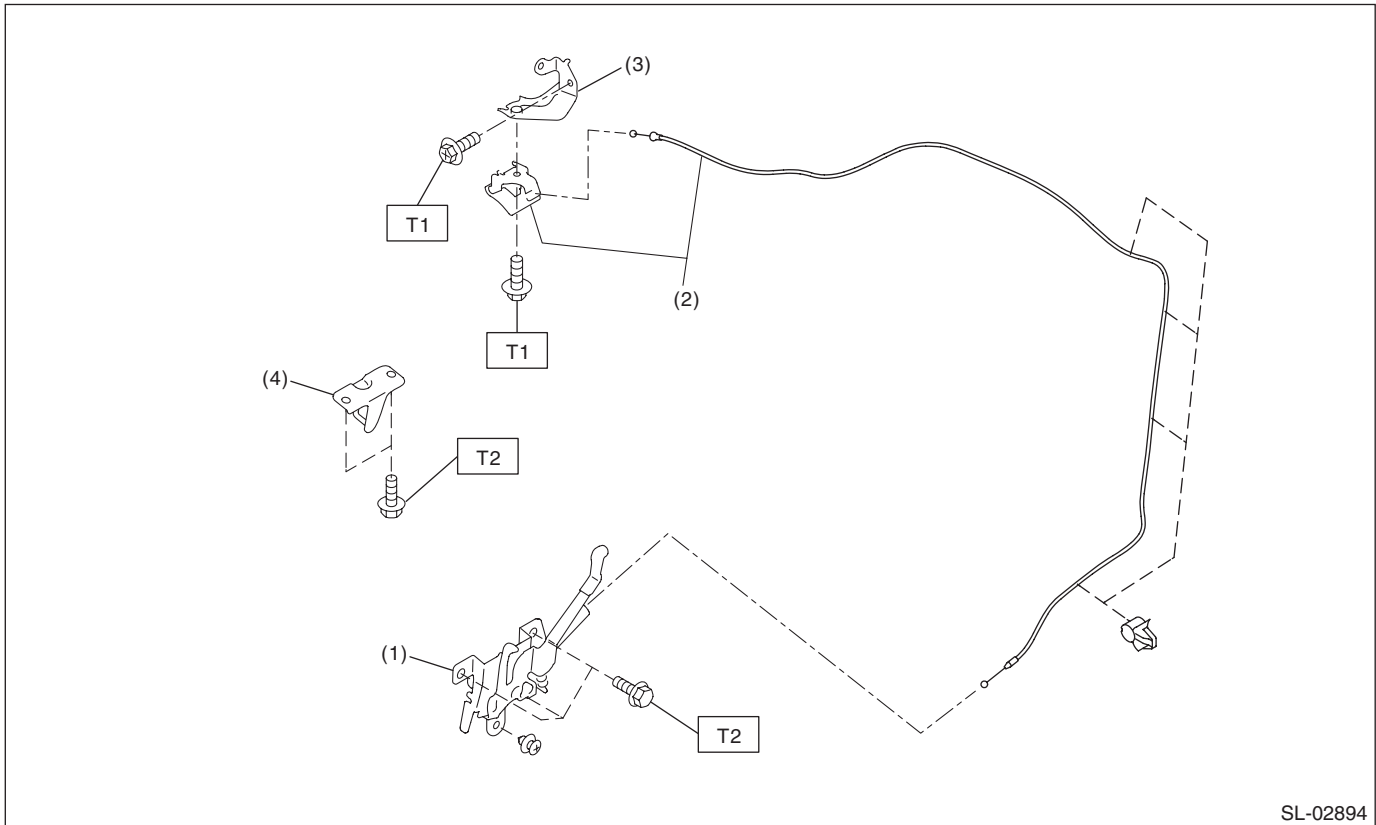
Tightening torque: N·m (kgf-m, ft-lb)

T: 7.5 (0.8, 5.5)

General Description

SECURITY AND LOCKS

3. FRONT HOOD LOCK



SL-02894

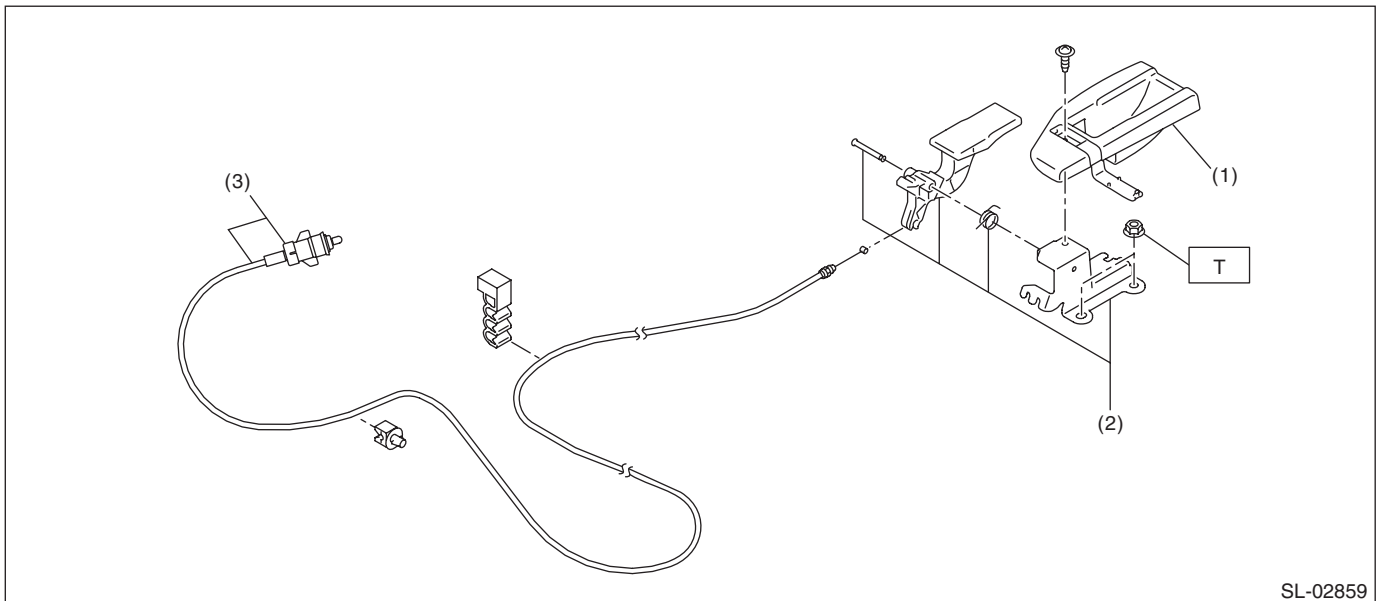
- | | |
|----------------------------|-----------------------------|
| (1) Lock ASSY - front hood | (3) Bracket - opener handle |
| (2) Cable - front hood | (4) Striker - front hood |

Tightening torque: N·m (kgf-m, ft-lb)

T1: 7.5 (0.8, 5.5)

T2: 33 (3.4, 24.3)

4. REMOTE OPENER



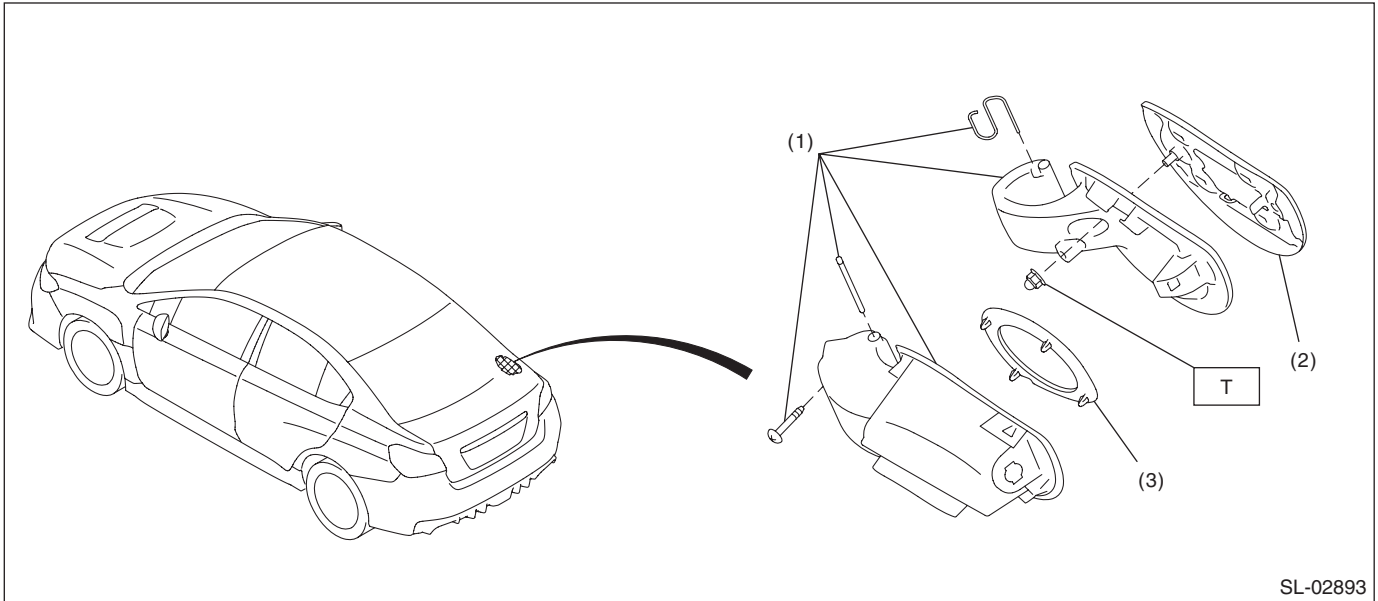
SL-02859

- | | |
|--------------------------|-----------------------|
| (1) Cover - handle | (3) Cable ASSY - fuel |
| (2) Pull handle - opener | |

Tightening torque: N·m (kgf-m, ft-lb)

T: 7.5 (0.8, 5.5)

5. FUEL FLAP



SL-02893

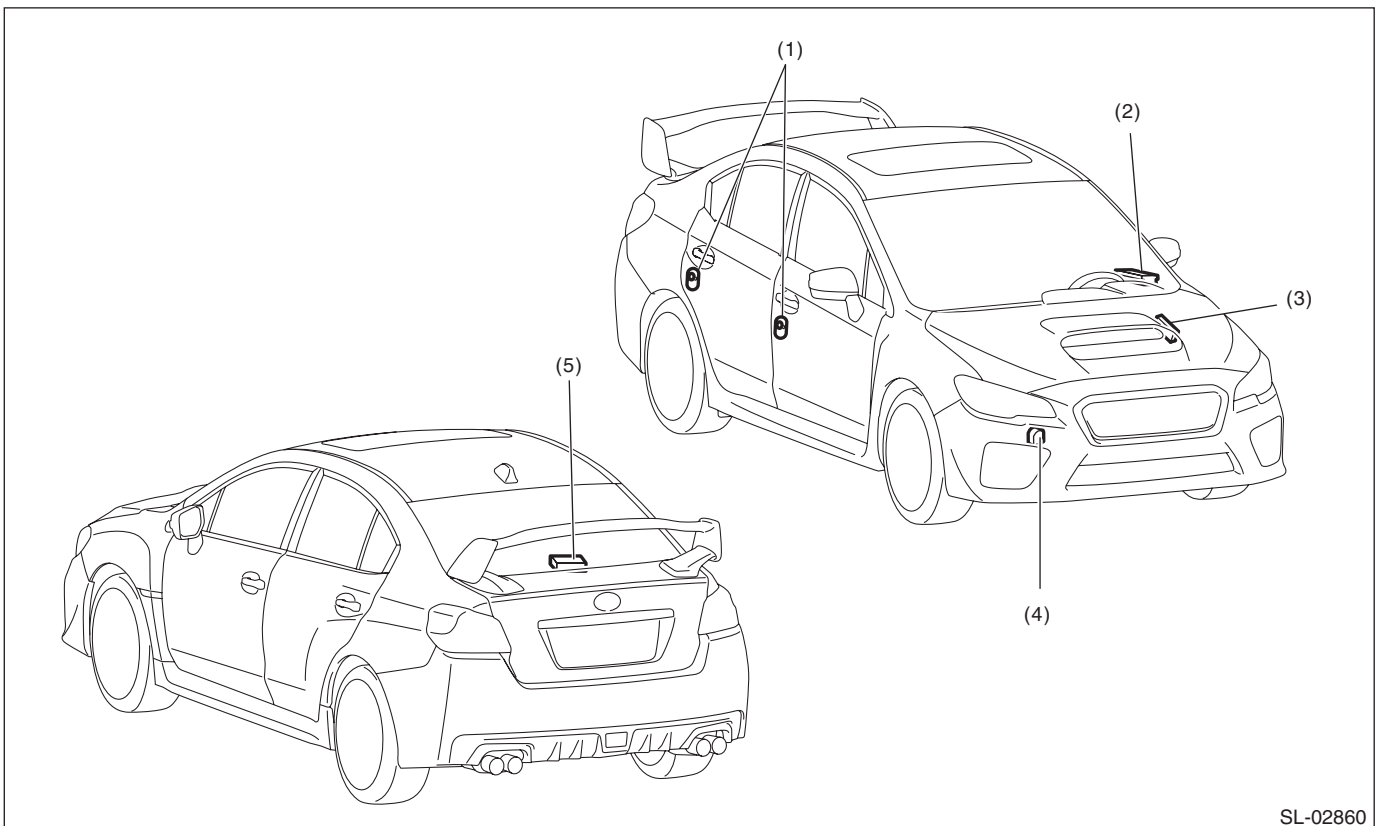
- (1) Saucer - COMPL
- (2) Flap - COMPL fuel

- (3) Ring clip

Tightening torque: N-m (kgf-m, ft-lb)

T: 7.5 (0.8, 5.5)

6. KEYLESS ENTRY SYSTEM



SL-02860

- (1) Door switch

- (2) Power window main switch

- (3) Body integrated unit

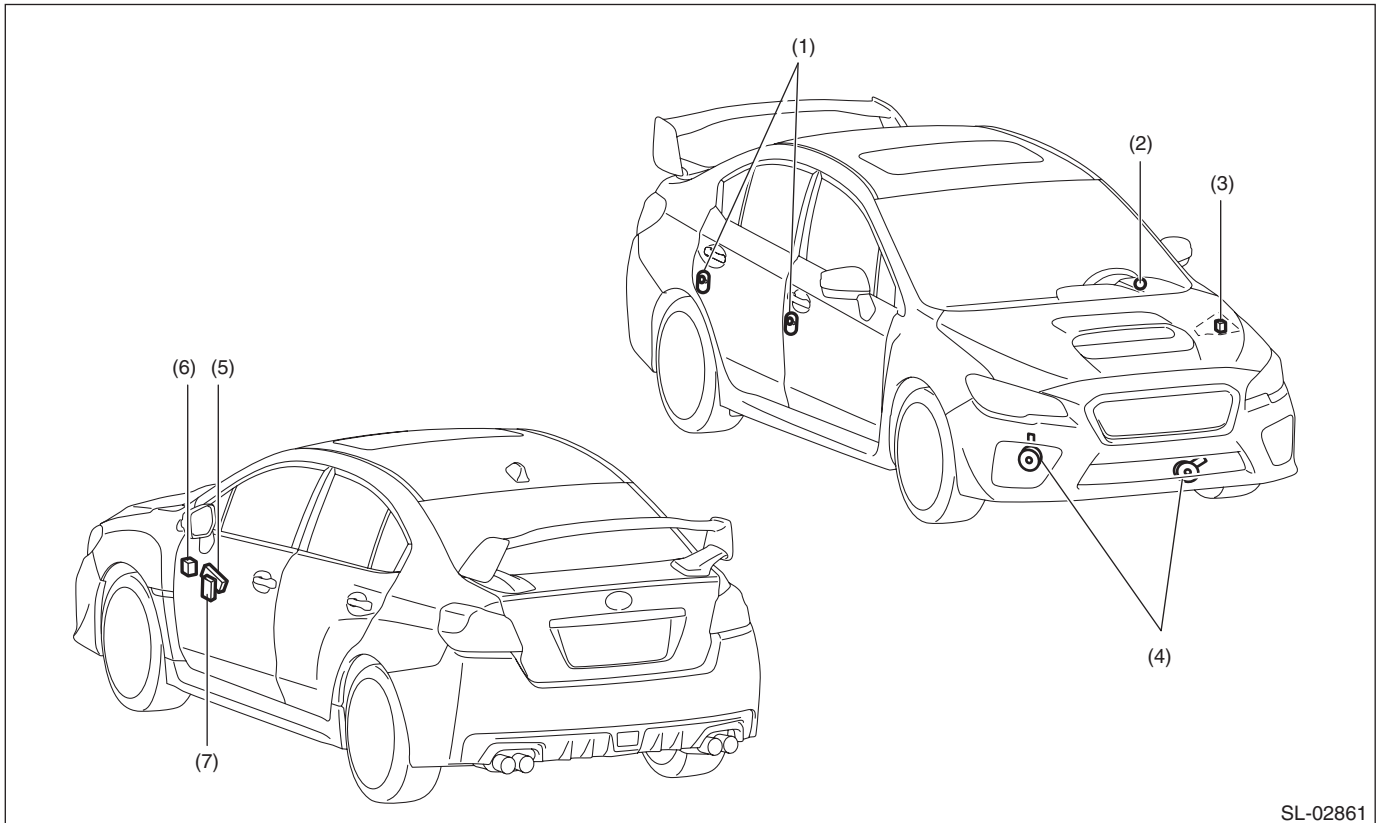
- (4) Keyless buzzer

- (5) Keyless entry control module

General Description

SECURITY AND LOCKS

7. SECURITY SYSTEM



SL-02861

- | | | |
|---|-----------------------------------|---|
| (1) Door switch | (4) Horn | (7) Impact sensor (driver's seat instrument panel side) (dealer option) |
| (2) Security indicator light (in combination meter) | (5) Body integrated unit | |
| (3) Horn relay (in main fuse box) | (6) Turn signal and hazard module | |

8. KEYLESS ACCESS WITH PUSH BUTTON START SYSTEM

NOTE:

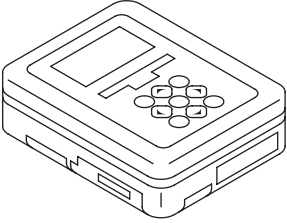
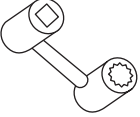
Refer to "Electrical Component Location" of "KEYLESS ACCESS WITH PUSH BUTTON START SYSTEM (DIAGNOSTICS)" section. <Ref. to KPS(diag)-11, Electrical Component Location.>

B: CAUTION

- Before disassembling or reassembling parts, always disconnect the battery ground cable from battery. When replacing the audio, control module and other parts provided with memory functions, record the memory contents before disconnecting the battery ground cable. Otherwise, the memory is cleared.
- If any immobilizer related part has been replaced, make sure to register the immobilizer.
- Be careful of the following items. Failing to do so may cause the airbag system malfunction.
 - Yellow connectors and harnesses with yellow tapes around them are the connectors and harnesses for the airbag system. When using a tester on these circuits, follow the cautions of "AIRBAG SYSTEM". <Ref. to AB-9, CAUTION, General Description.>
 - Be careful not to damage the airbag system wiring harness when servicing the electrical parts around the steering column.
- When removing, installing or replacing the VDCCM&H/U, VDCCM&H/U bracket, steering wheel or steering angle sensor (steering roll connector), perform "VDC sensor midpoint setting mode" of the VDC. <Ref. to VDC-16, VDC SENSOR MIDPOINT SETTING MODE, ADJUSTMENT, VDC Control Module and Hydraulic Control Unit (VDCCM&H/U).>

C: PREPARATION TOOL

1. SPECIAL TOOL

ILLUSTRATION	TOOL NUMBER	DESCRIPTION	REMARKS
 <p>ST1B022XU0</p>	1B022XU0	SUBARU SELECT MONITOR III KIT	Used for troubleshooting the electrical system. NOTE: For detailed operation procedures of SUBARU SELECT MONITOR III KIT, refer to "PC application help for Subaru Select Monitor".
 <p>ST499987400</p>	499987400	WRENCH COMPL	Used for adjusting the lock assembly - front hood.

2. GENERAL TOOL

TOOL NAME	REMARKS
Circuit tester	Used for measuring resistance and voltage.
Drill	Used for replacing ignition key lock.
Reverse tap	Used for replacing ignition key lock.
TORX® T30	Used for removing and installing door outer handle cover and frame assembly.
Clip remover	Used for removing trim clip.